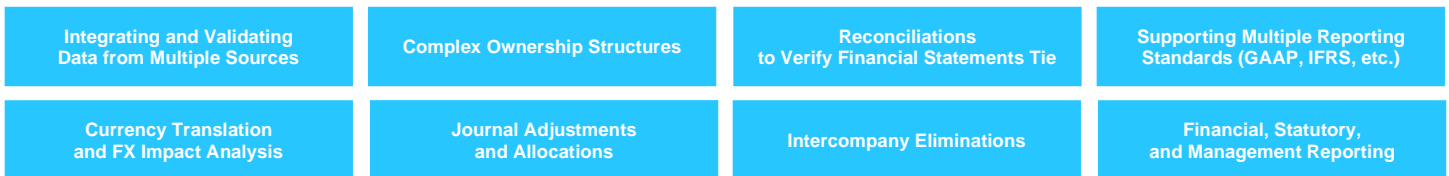


SOLUTION OVERVIEW

GLOBAL FINANCIAL CONSOLIDATION & REPORTING

Whether organizations rely on spreadsheets or on-premises applications, the financial close, consolidation, and reporting process presents many challenges that finance and accounting professions must overcome. While spreadsheets are a staple of close, consolidation, and reporting, data has become more pervasive and spread across different systems making the collecting, compiling, and validation tedious, time-consuming, and error-prone. Further, reporting on financial data in spreadsheets requires extensive manual manipulation. On-premises applications offer great benefits compared to relying on spreadsheets. However, these applications present challenges of their own. These applications require a heavy reliance on information technology (IT), carry significant maintenance costs, and limit an organization's ability to scale.

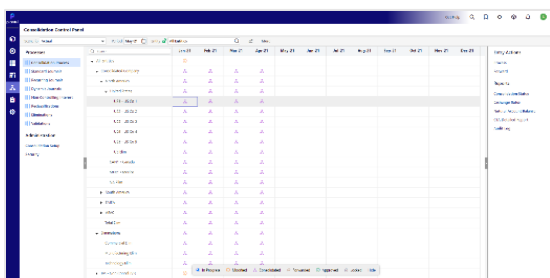
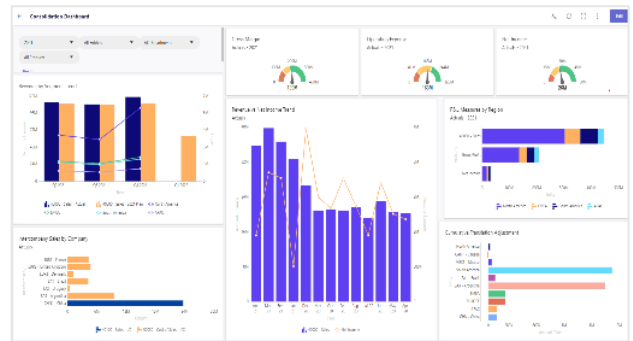
COMMON CHALLENGES



Leveraging purpose-built financial close, consolidation, and reporting applications found in today's enterprise performance management (EPM) software solutions are becoming the preferred approach to solve the challenges for mid-sized to larger enterprises. These applications are designed to integrate data from multiple sources, have specific functionality built-in to handle the complexities of financial close and consolidation, and have all the required security and audit trails.

TRINTECH + PLANFUL + WORKIVA

Enable your team to work smartly by combining **Trintech (Adra)**, **Planful** and **Workiva's Wdesk**. Wdesk is a collaborative work management platform that provides a single source of truth to streamline your financial reporting, compliance requirements, and risk management, freeing up your team to focus on strategic analysis and managing the business.



Working from front to back, Wdesk integrates seamlessly with Planful, the cloud-based platform built for Accounting, Finance, and Business modeling that helps connect data and people to make better-informed decisions. Planful enables real-time updates that shorten the consolidation and close process, giving valuable time back and allowing you to close the books – all while complying with regulatory reporting standards.

From trial balance collection to chart of accounts mappings. From currency translation to intercompany eliminations. From equity accounting rules to allocations. Planful is your consolidation engine. Through seamless integration, pull your results into the Workiva Wdesk platform. Wdesk updates your filing

template with the latest consolidated financial results and governs the entire filing process.

Continuing backwards, Trintech's Adra solution completes the process by helping organizations simplify their financial close and reconciliation process. The cloud-based (SAAS) software suite includes Adra Matcher, which automates transaction matching; Adra Balancer, a balance sheet reconciliations platform; Adra Task Manager, a project management tool for financial close, and Adra Analytics, which provides full visibility into the close process.

SOLUTION OVERVIEW

TRINTECH + PLANFUL + WORKIVA

Combine the automation capabilities of **Trintech** and the financial consolidation power of **Planful** with the financial reporting capability of **Workiva Wdesk** to develop an integrated solution for financial performance management.

BENEFITS INCLUDE:

- A single source of truth for a SOX-compliant close and transparent consolidated financial reporting that can meet GAAP and IFRS reporting requirements.
- Mitigates internal control risks associated with Excel and improves data accuracy by replacing Excel with a secure, controlled, and transparent environment for consolidations.
- In-memory calculations to instantly view consolidated results after loading a new trial balance.
- Out-of-the-box dynamic journal entries and reclassifications with built-in financial logic that accounts for debits/credits, account types, currency types, and month-to-date (MTD) and year-to-date (YTD) balances without complex coding.
- Flexibility to accommodate the dimensionality your company needs for internal and external reporting.
- Integrated reporting that ensures when a change occurs in one place, all associated instances are automatically updated.
- Efficient, attractive board book preparation, minus the books and frantic last-minute updates.
- Instantaneous updates to financial footnotes and track progress for earnings release presentations.
- Built-in workflow that lets users know where they are in the close process at all times.
- Powerful, scalable platform for connected consolidations extensible to support planning throughout the entire enterprise.
- A straightforward and user-friendly interface for business users to use, manage, and own.
- Automated multi-way transaction matching letting you focus on handling exceptions.
- Matched transactions seamlessly integrate into balance sheet reconciliations.
- Centralized checklists and documents provide full visibility and control of the entire financial close from start to finish.
- Tailored reports and dashboards highlight opportunities for improvement.
- Reduction in financial close time.

KEY FUNCTIONALITY

- A global financial consolidation solution in the cloud, accessible from any device
- Cross-functional collaboration that allows teams to work on a single document at the same time
- Full audit trail tracking for both system-generated and manually input changes
- Data mapping and load capabilities from one or more financial and/or operational sources
- Instantaneous access to results of currency conversions, calculate cumulative translation adjustment (CTA), enable historical overrides, and perform modeling to understand foreign exchange (FX) impact
- Intercompany matching, eliminations, and consolidations automation
- Multiple consolidation methods supported
- Multi-dimensionality to support your company's statutory and management reporting and analysis needs
- Print-quality financial reporting, SEC reporting, board reporting, and earnings release
- XBRL tagging for SEC reporting

GET STARTED NOW

Contact us to learn more or receive a demo of this solution

epm@keyrus.com